

# **Stand-Alone Workstation Guide**

**2008.12.01**

## Table of Contents

Table of Contents .....	2
Stand-Alone Workstation Guide .....	3
BitDefender & SAAZ Stand-Alone Architecture .....	3
Existing Sites .....	3
New Sites .....	3
License Management Site.....	4
Existing Partner Site (not recommended).....	4
New Site for Stand-Alone Workstations (recommended) .....	4
Creating Unattended Installation Packages.....	5
Management Agent.....	5
Business Client .....	13
Zenith Recommended Configuration .....	21

## Stand-Alone Workstation Guide

This document covers the BitDefender & SAAZ Stand-Alone Architecture, BitDefender License Management Site for Stand-Alone Workstations and Creating Unattended Installation Packages for the BitDefender Management Agent and the Business Client.

The BitDefender Management Console must be installed, given a public IP Address, and all appropriate ports must be excluded from firewalls on both the Partner's network and the Client's network.

### BitDefender & SAAZ Stand-Alone Architecture

#### Existing Sites

There should be little to no changes for existing Client Sites as long as the SAAZ Agent is deployed to each system that requires BitDefender.

If Partners plan to deploy BitDefender's Management Console to a Server on the Client's network then Partners will be able to request BitDefender's:

- Managed Server
- Managed Workstation

If Partners do not deploy BitDefender's Management Console to a Server on the Client's network then Partners will only be able to request BitDefender's:

- Unmanaged Server

When totaling up the number of licenses required for the Site only those systems that fall under Managed Server, Unmanaged Server, or Managed Workstation should be included in the count. This applies to both the *BitDefender Small Office Security* and *BitDefender Security for Exchange*. The request for BitDefender licenses is performed in the ITS Portal under the Client's Site.



**Note** To use BitDefender or any other Technology Partner through Zenith the SAAZ Agent must be installed to the system and remain installed on the system as long as the software and services are used. Systems without the SAAZ Agent will not be supported and violate the licenses agreements.

---

If there are unmanaged workstations at the client location **the SAAZ Agent for that Client's Site still needs installed**. However, the license management now shifts from the Client Site to the License Management Site.

#### New Sites

Partners will deploy the SAAZ Agent to all systems that require managed services. This process is standard and does not deviate from the normal deployment. If Partners plan to deploy BitDefender's Management Console to a Server on the Client's network then Partners will be able to request BitDefender's:

- Managed Server
- Unmanaged Server

- Managed Workstation

When totaling up the number of licenses required for the Site only those systems that fall under Managed Server, Unmanaged Server, or Managed Workstation should be included in the count. This applies to both the *BitDefender Small Office Security* and *BitDefender Security for Exchange*. The request for BitDefender licenses is performed in the ITS Portal under the Client's Site.



**Note** To use BitDefender or any other Technology Partner through Zenith the SAAZ Agent must be installed to the system and remain installed on the system as long as the software and services are used. Systems without the SAAZ Agent will not be supported and violate the licenses agreements.

---

If there are unmanaged workstations at the client location **the SAAZ Agent for that Client's Site still needs installed**. However, the license management now shifts from the Client Site to the License Management Site.

## License Management Site

All Stand-Alone workstations need managed from one Management Console. Zenith recommends Partners host this Management Console at their office. Partners can choose to use their existing Site in the ITS Portal or create a separate Site to manage and maintain stand-alone workstations at their clients' locations.

### Existing Partner Site (not recommended)

As it may make licenses management difficult and confusing this option is not recommended, but is mentioned here because it is a possibility that could be selected in the configuration.

This is one option for management stand-alone workstation licenses for BitDefender. In this scenario you will request licenses not just for your own systems but for each stand-alone client workstation as well. If more systems are put online by end-clients you would request a license increase for your Site.

### New Site for Stand-Alone Workstations (recommended)

The License Management Site is only used to request BitDefender licenses and servers no other monitoring or maintenance purpose in the ITS Portal. Make sure you install the correct SAAZ Agent to the stand-alone workstation. The correct agent is the agent that is deployed to all other systems at the Client Site. You **should not be** creating or deploying agents in the License Management Site.

You will need a count of all unmanaged workstations at all of your Client Sites. This is the request number used under the ITS Portal > Configuration > Base Configuration > BitDefender License Management for both the *BitDefender Small Office Security* and *BitDefender Security for Exchange* if applicable.

You should make a Group in the BitDefender Management Console specifically for Stand-Alone Workstations. This will allow you to apply settings to all stand-alone systems. If you want you could create Client Groups if you want to fine turn the management of the stand-alone systems.

## Creating Unattended Installation Packages

The unattended installation package helps you to install BitDefender Management Agent and/or BitDefender client products on computers at remote locations which need to be managed by the BitDefender Management Server via Public IP over the internet. An unattended installation package is an executable archive (an installer) which contains the installation package for the BitDefender Management Agent or the BitDefender Business Client product.

The configurations, which specify:

- What product components to be installed.
- The product-related installation settings and configurations, if any.
- How to interact with the user during installation.
- The reboot procedure after the installation is completed.

You can do one of the following with this package:

- Put it on a removable storage device (CD, DVD, USB stick) and then copy it on network computers.
- Send it by e-mail to a certain user.
- Transfer it in a shared folder, so that it can be read from any other workstation.
- Use a logon script to automatically install it after the login procedure.

To create an unattended installation package, launch Deployment Tool and follow the wizard steps.



**Note** To fully deploy BitDefender you must choose **Create an unattended installation package for later use** in the second step of the wizard. Both the Management Agent and Business Client software must be installed to the target system.

---

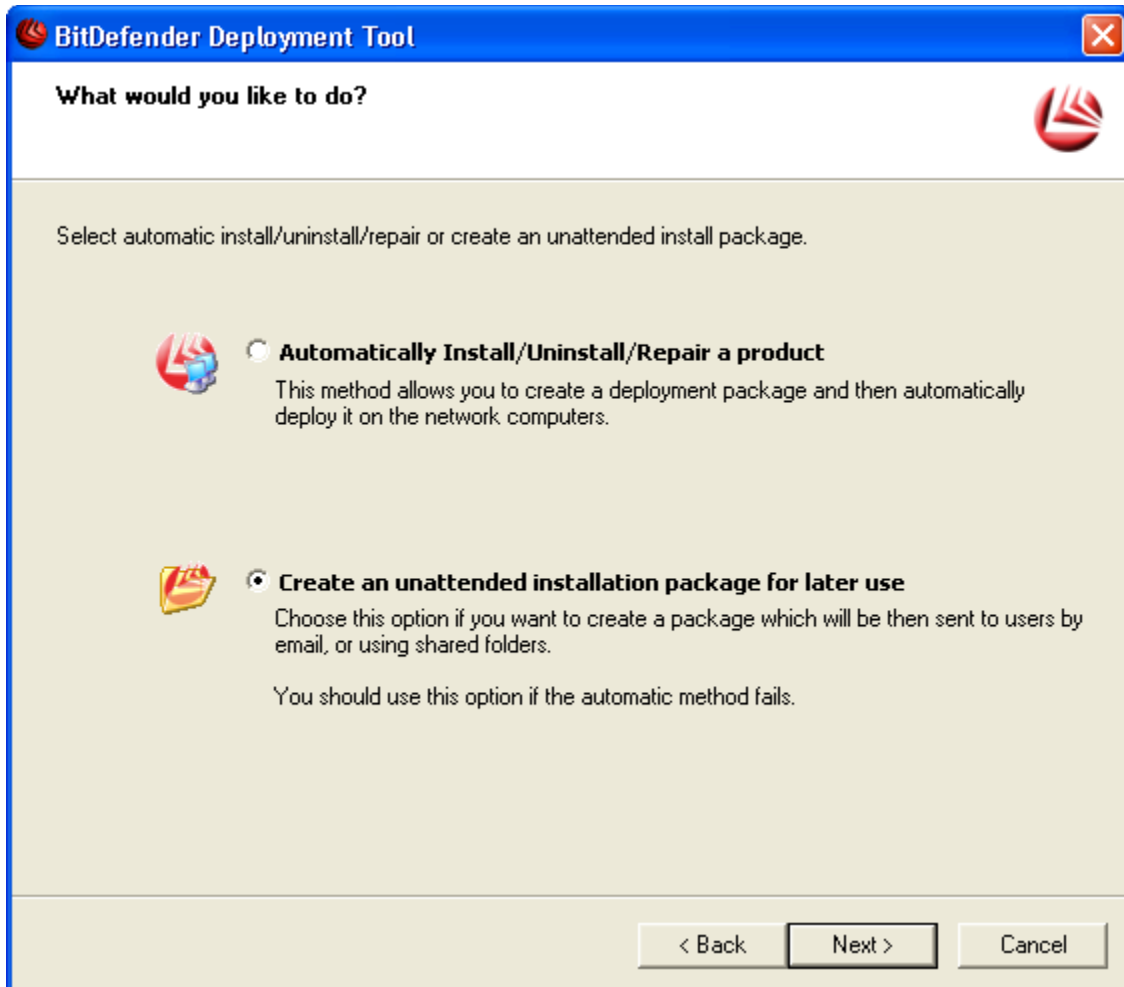
## Management Agent

When you launch Deployment Tool, a welcome window will appear.



Click **Next**.

The next window allows you to select the deployment method you want to use.

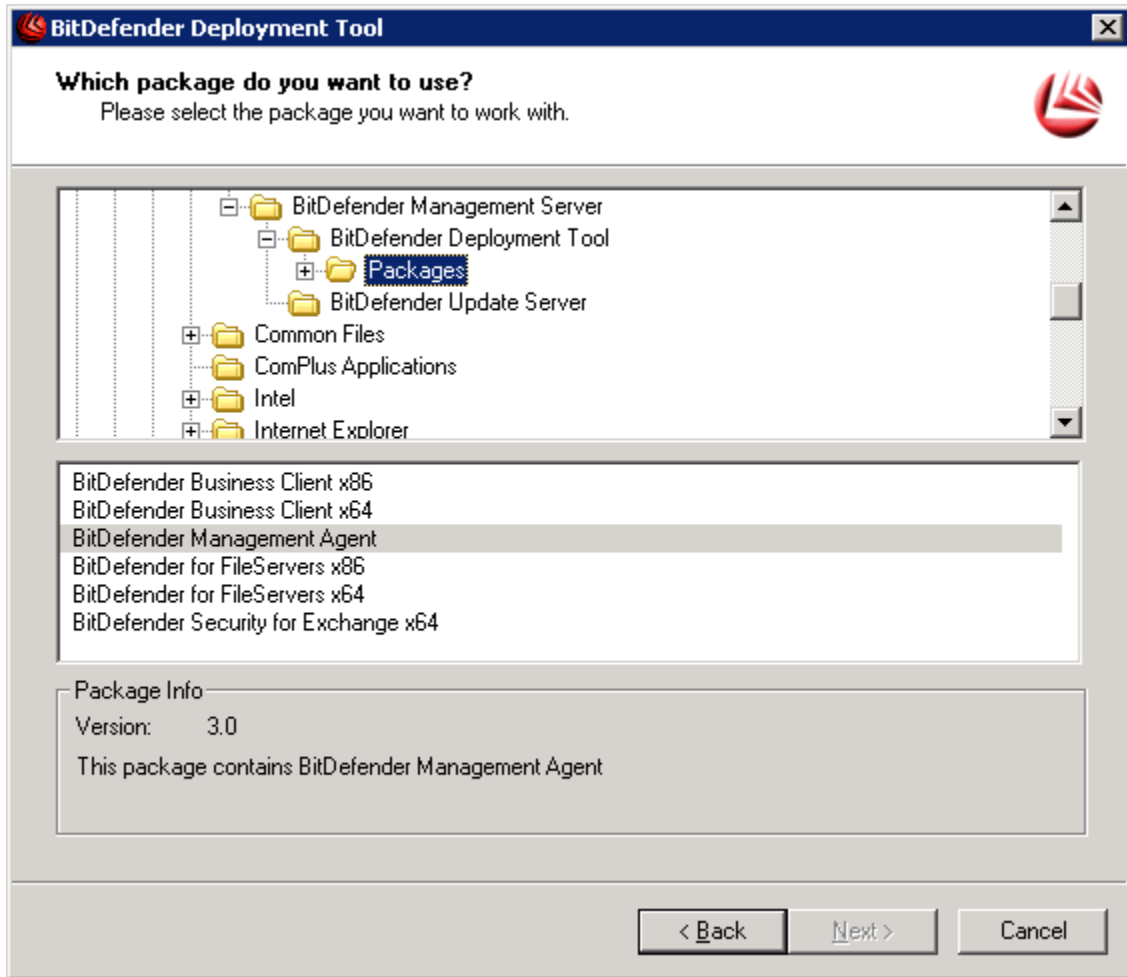


The following options are available:

- **Automatically Install / Uninstall / Repair a product** - to automatically install, remove or repair BitDefender products on remote network computers.
- **Create an unattended installation package for later use** - to create an installation package which can be used to manually install BitDefender Management Agent or the BitDefender client products.

Select the second option and click **Next**.

The next window allows you to select the package you want to use.



You can see the list of available installation packages. First you will need to select the BitDefender Management Agent. In the next section you will be selecting the appropriate Business Client or File Server package.

Select the BitDefender Management Agent and click **Next**.

The next window allows you to specify which package components to install and package-specific installation settings.

**Which components should be installed?**  
Select the components you want to install.

Please choose the components and options to be installed:

BitDefender Management Agent

BitDefender Management Agent: Manages BitDefender products installed on this computer

Please set the following properties, as required by the installation kit.

Property Name	Property Value
BitDefender Management Server Name or IP	203.54.119.65
BitDefender Agent Port	7072

Public IP of the server

< Back    Next >    Cancel

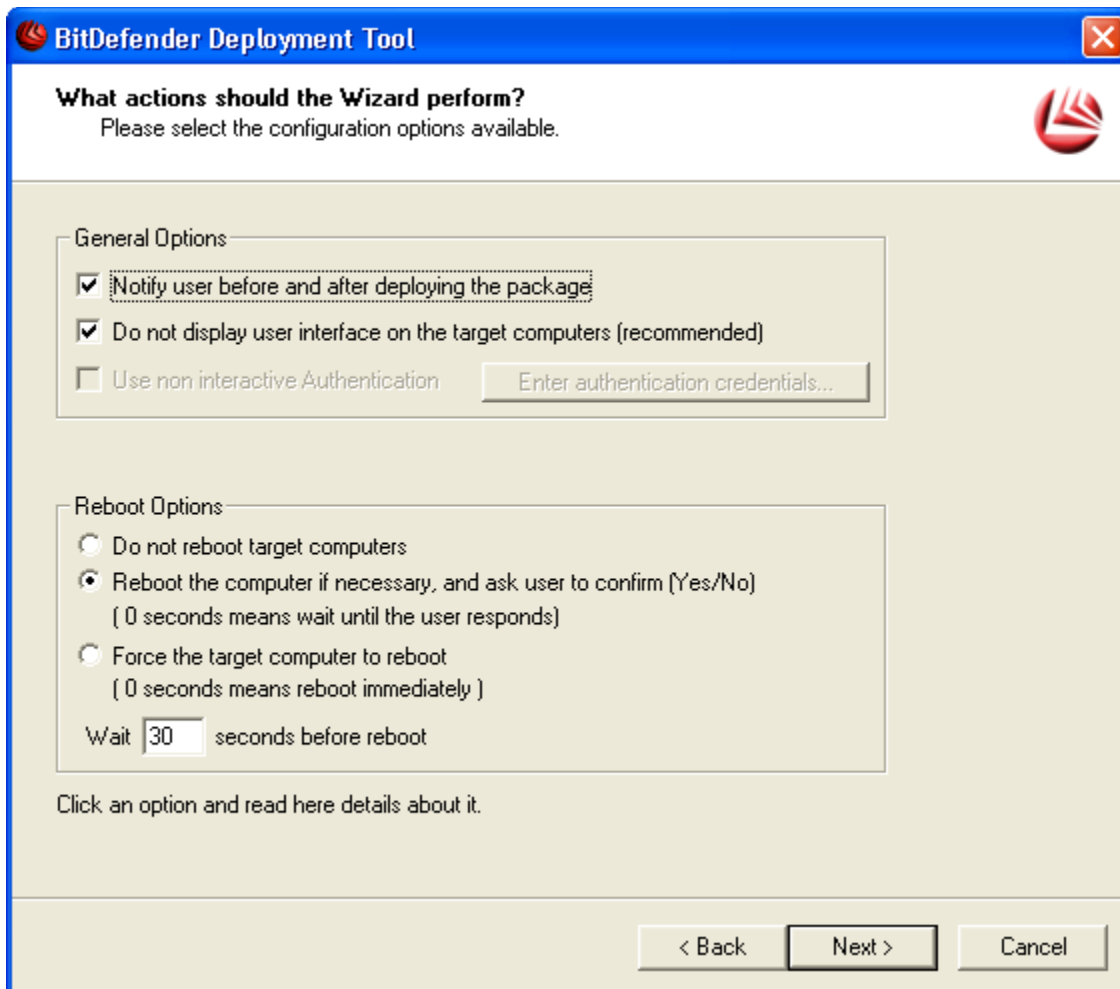
- **BitDefender Management Server Name or IP** - Type the Public IP address of the BitDefender Management Server in the corresponding field. You must use an IP Address. Do not use a URL, DNS, WINS, Domain Name, or NETBIOS name for the server.
- **BitDefender Management Agent Port** - Type the communication port used by the BitDefender Management Agent in the corresponding field. This port needs to be opened or enabled on both your firewall and the client's firewall to enable communication between the Agent and the BitDefender Management Server over the internet.



**Note** The Default port used by the BitDefender Agent to communicate with the BitDefender Management Server is 7072; however BitDefender can be configured to run on another port. The Public IP of the server is necessary for those agents who would be communicating with the server over the internet.

Click **Next**. A new window will appear.

This window allows you to configure the deployment options.



The deployment options are grouped into two categories:

### General Options

The options in the **General Options** category allow you to specify the deployment behavior on the target computers. You can check:

- **Notify user before and after deploying the package** - to alert the user logged on the target computers about the deployment process. Two dialogs will appear on the user's screen, before and after the deployment process.
- **Do not display user interface on the target computers (recommended)** – to install the package silently in the background. The Windows Installer interface will not be displayed on target computers.

### Reboot Options

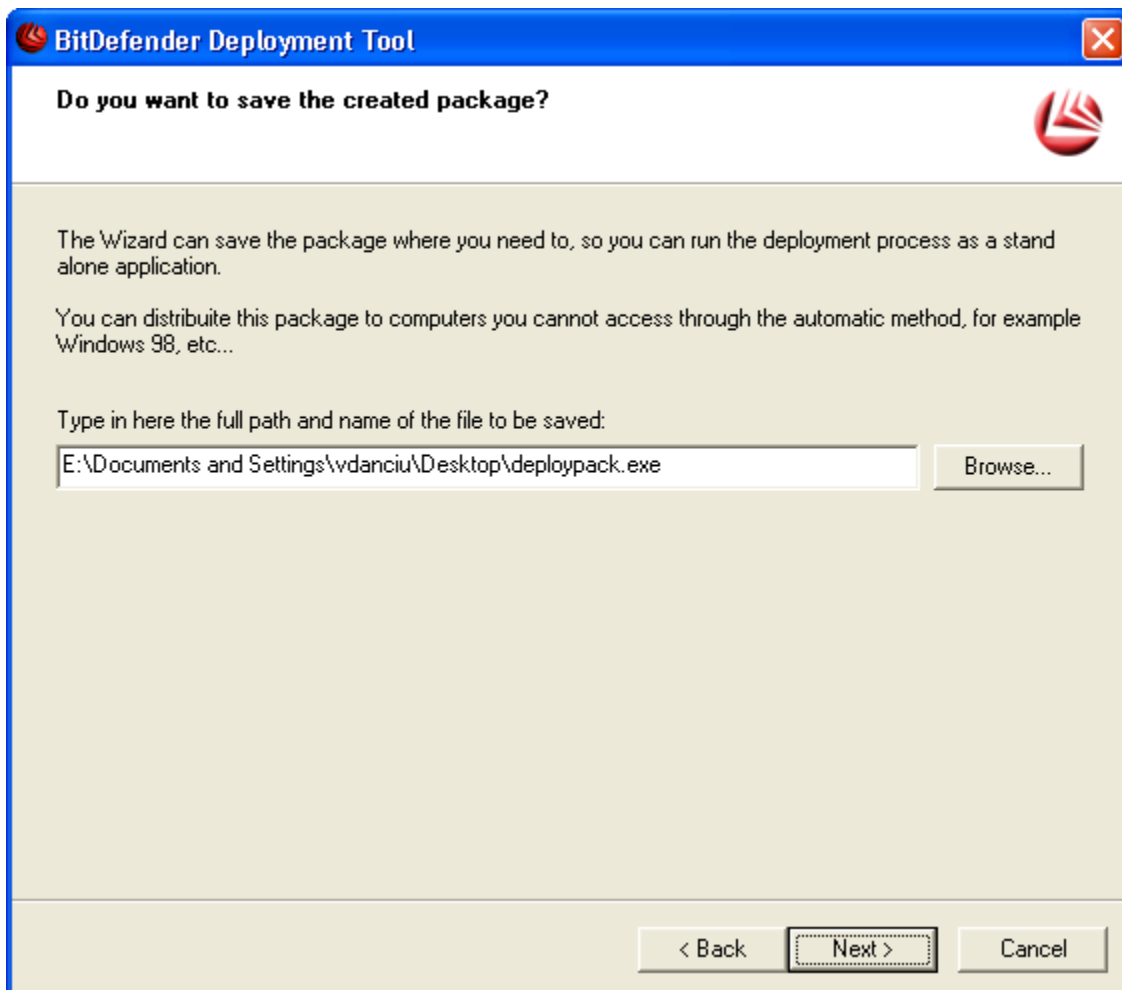
Usually, after the deployment is completed, the target computers must be restarted. The options in the **Reboot Options** category allow you to specify how to restart the target computers. If you select:

- **Do not reboot target computers** - the target computers will not be restarted, even if necessary. BitDefender will wait for a user to restart them.

- **Reboot the computer if necessary, and ask the user to confirm** - the user will be prompted to restart the computer, if necessary. If no user response is received within the specified time interval, the computer is automatically restarted. To specify the time interval until restart, type the number of seconds in the edit field. The default value is 0 and will automatically restart the system.
- **Force the target computer to reboot** - the target computers will be restarted after the specified time interval. To specify the time interval until restart, type the number of seconds in the edit field. The default value is 0 and will automatically restart the system.

Click **Next**. A new window will appear.

This window allows you to create and save the unattended installation package.



You can make any changes you want by returning to the previous steps by clicking the **Back** button.

To specify the package name and where to save it, follow the next steps:

1. Click **Browse**.
2. Select the location where to save the file. You can save it on the local machine or on a network share.
3. Save the file with the desired name. The default filename is `deploypack.exe`.

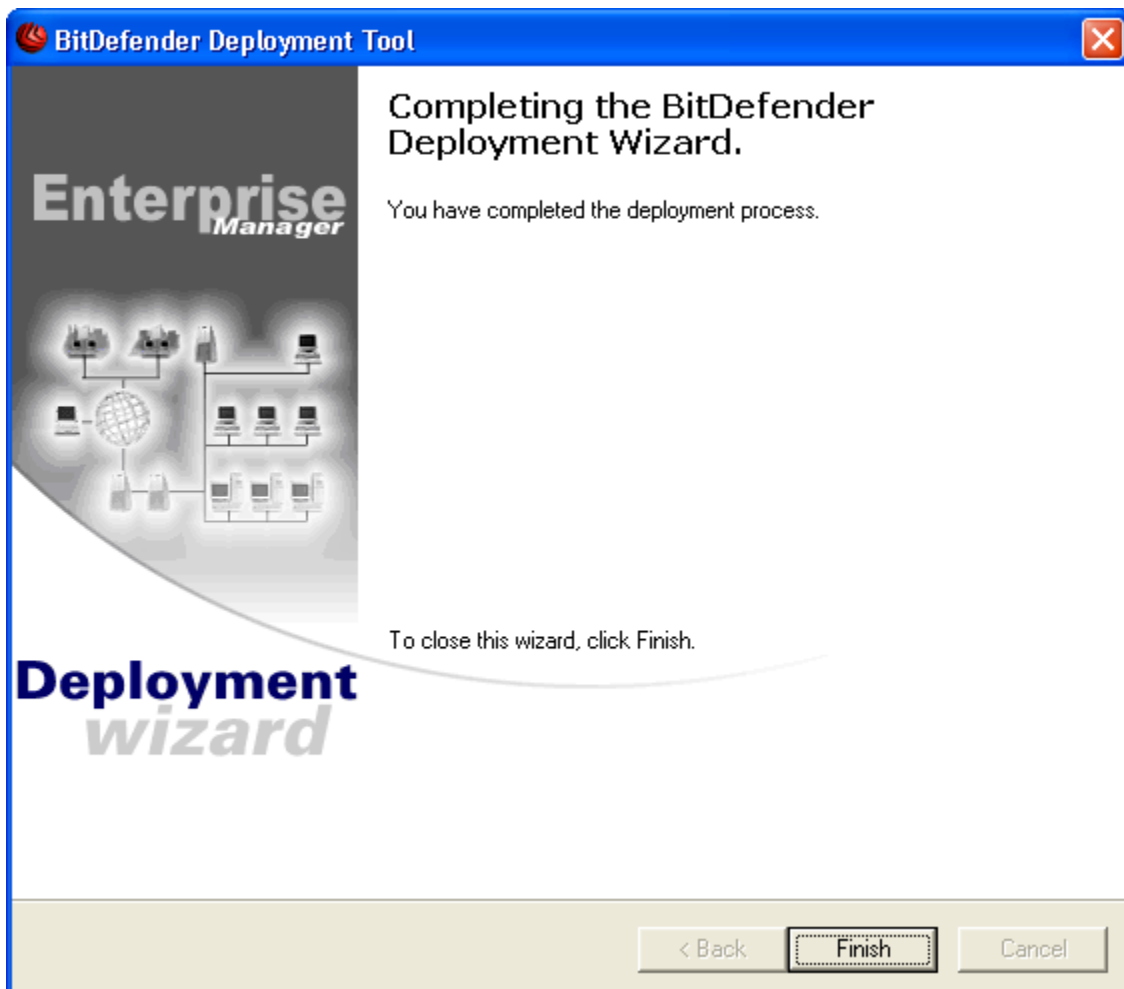


**Note** We recommend that you choose an explicit filename, such as `deploypack_bdagent.exe`. You can also type the full path and name of the installation package directly in the edit field.

---

Click **Next** to create and save the unattended installation package. A new window will appear.

The next window shows you the results.



Click **Finish** to close the window.

You can find the unattended installation package at the location where you chose to save it. Next, you will have to copy the file on the target computers and execute it.

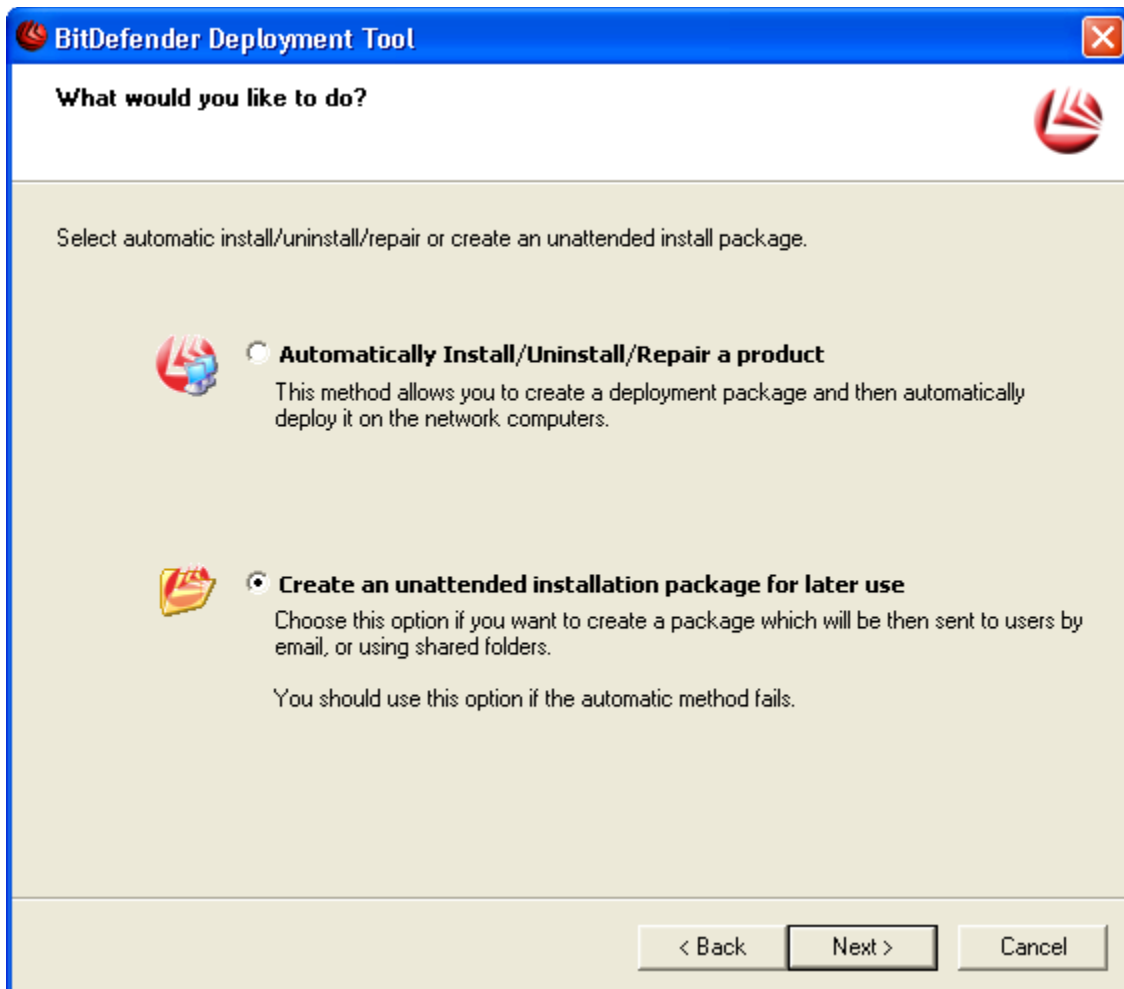
## Business Client

When you launch Deployment Tool, a welcome window will appear.



Click **Next**.

The next window allows you to select the deployment method you want to use.

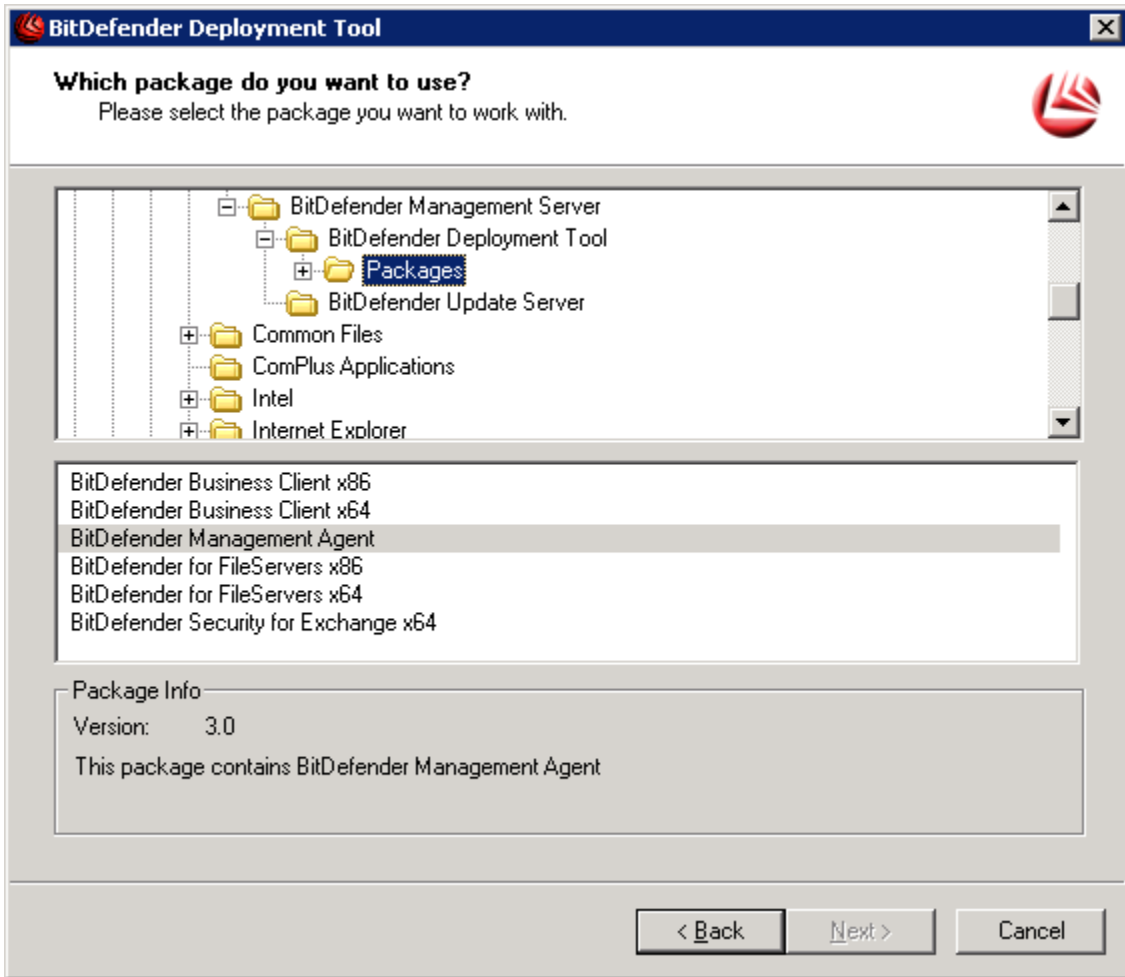


The following options are available:

- **Automatically Install / Uninstall / Repair a product** - to automatically install, remove or repair BitDefender products on remote network computers.
- **Create an unattended installation package for later use** - to create an installation package which can be used to manually install BitDefender Management Agent or the BitDefender client products.

Select the second option and click **Next**.

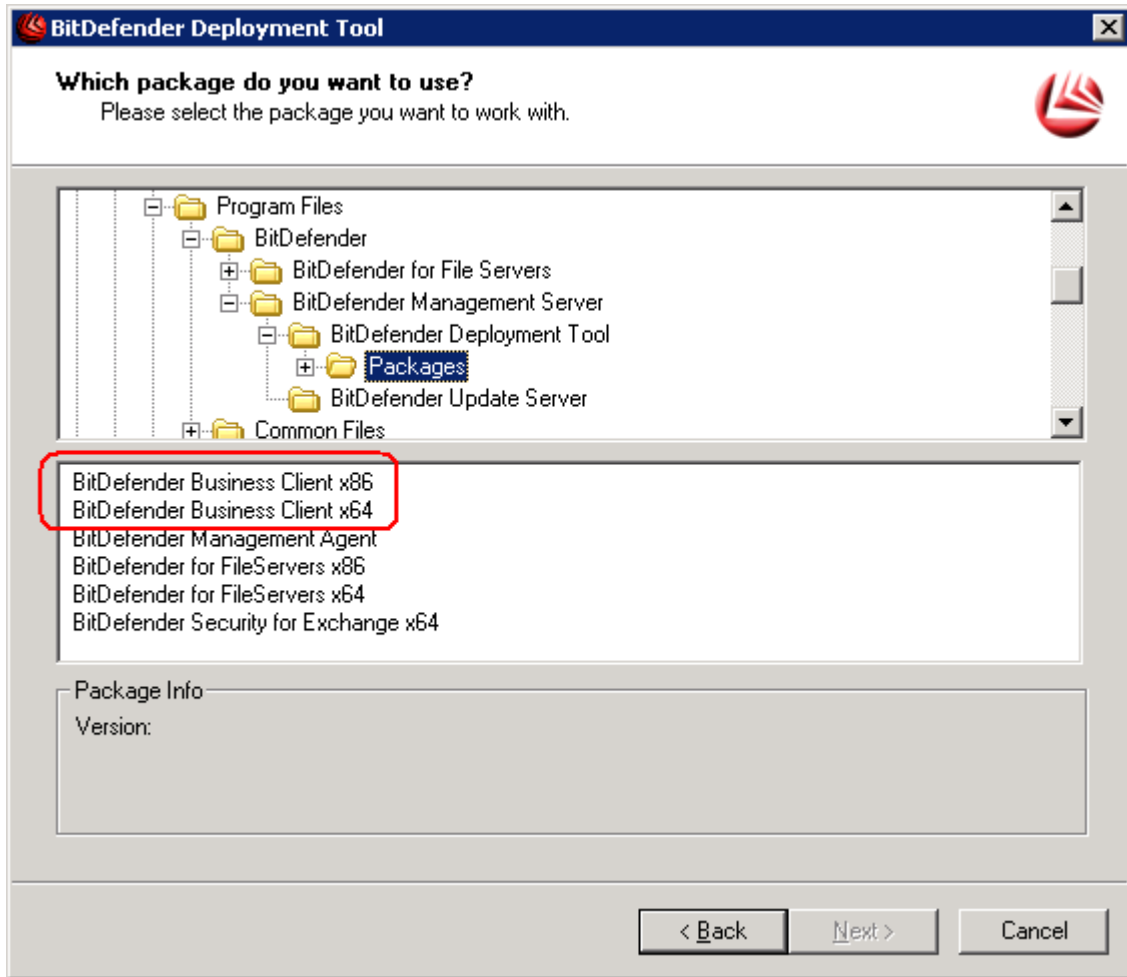
The next window allows you to select the package you want to use.



You can see the list of available installation packages. First you will need to select the BitDefender Management Agent. In the next section you will be selecting the appropriate Business Client or File Server package.

Select the BitDefender Management Agent and click **Next**.

The next window allows you to specify which package components to install and package-specific installation settings.



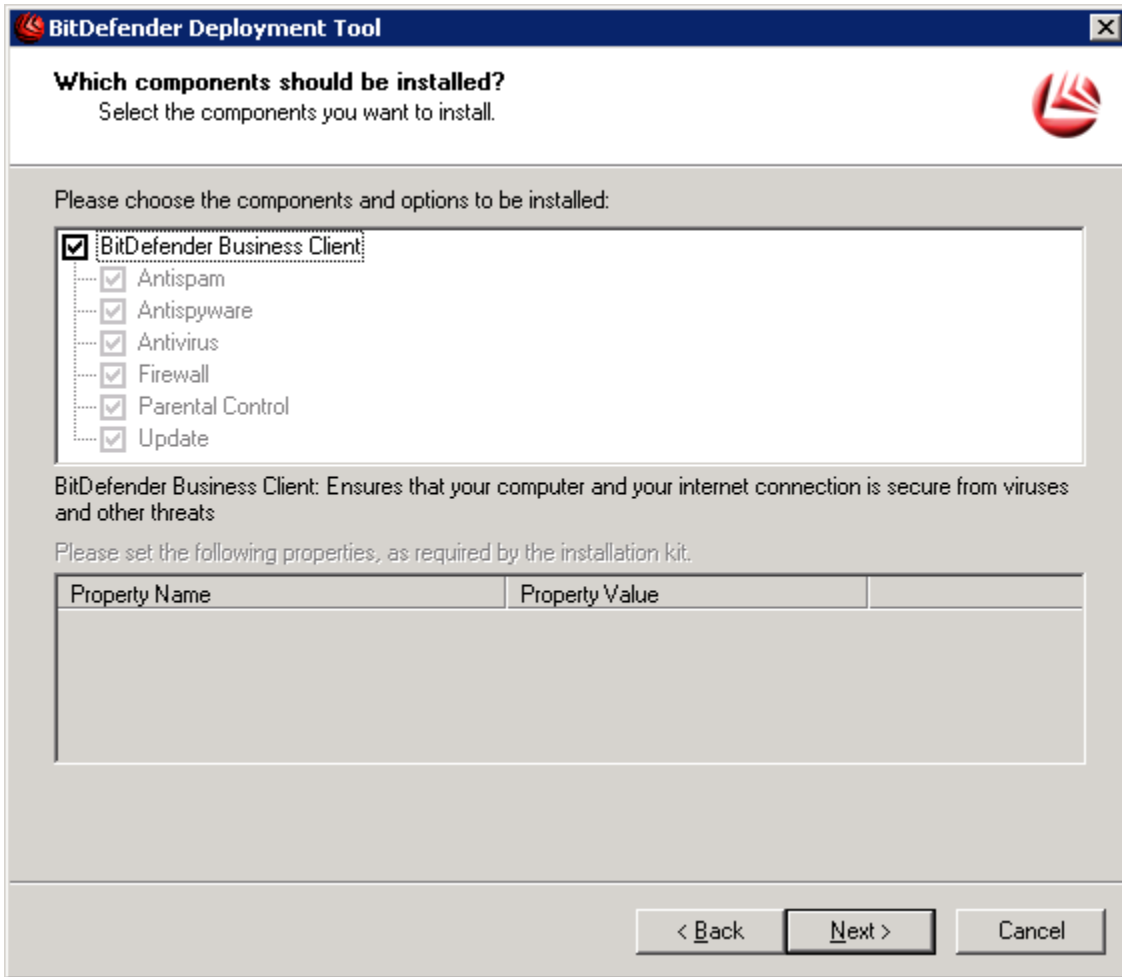
You can see the list of available installation packages. You will need to select appropriate client to deploy to your stand-alone managed desktops.

The options are:

Select BitDefender Business Client x86 for 32 bit OS.  
Select BitDefender Business Client x64 for 64 bit OS.

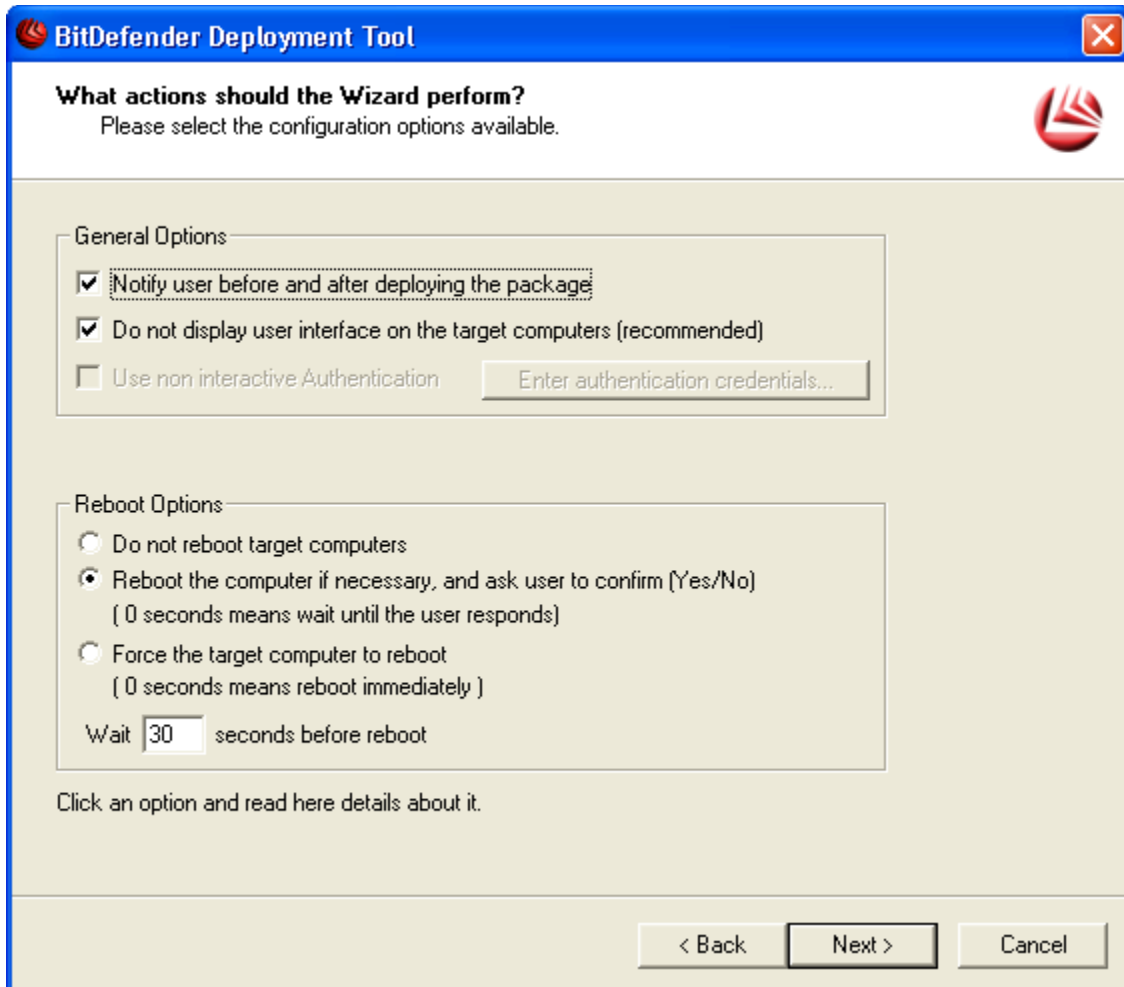
Click **Next**.

The next window displays the modules and sub-components of the Business Client which will be getting installed. The ones which are not required will need to be disabled via Policy Management.



Click **Next**.

This window allows you to configure the deployment options.



The deployment options are grouped into two categories:

### General Options

The options in the **General Options** category allow you to specify the deployment behavior on the target computers. You can check:

- **Notify user before and after deploying the package** - to alert the user logged on the target computers about the deployment process. Two dialogs will appear on the user's screen, before and after the deployment process.
- **Do not display user interface on the target computers (recommended)** – to install the package silently in the background. The Windows Installer interface will not be displayed on target computers.

### Reboot Options

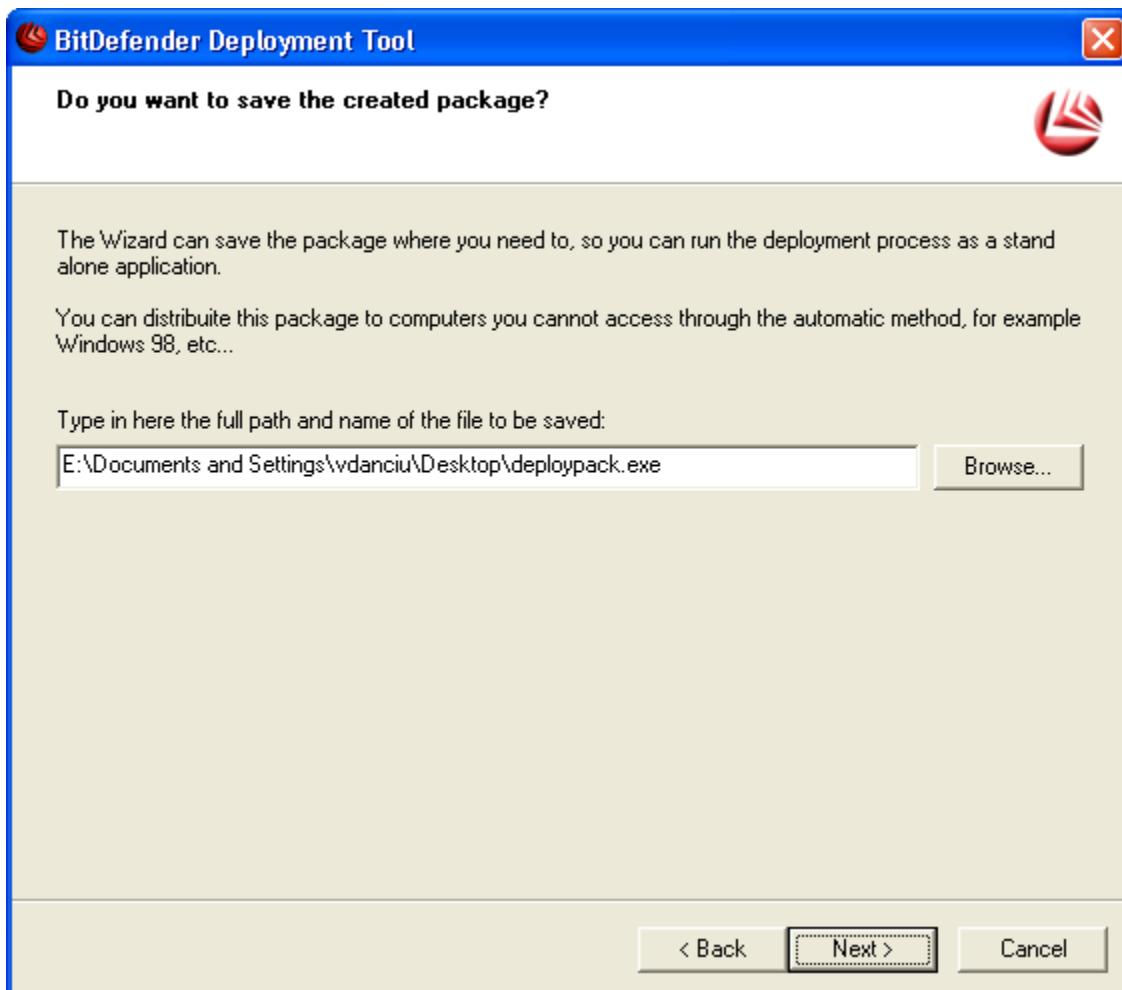
Usually, after the deployment is completed, the target computers must be restarted. The options in the **Reboot Options** category allow you to specify how to restart the target computers. If you select:

- **Do not reboot target computers** - the target computers will not be restarted, even if necessary. BitDefender will wait for a user to restart them.

- **Reboot the computer if necessary, and ask the user to confirm** - the user will be prompted to restart the computer, if necessary. If no user response is received within the specified time interval, the computer is automatically restarted. To specify the time interval until restart, type the number of seconds in the edit field. The default value is 0 and will automatically restart the system.
- **Force the target computer to reboot** - the target computers will be restarted after the specified time interval. To specify the time interval until restart, type the number of seconds in the edit field. The default value is 0 and will automatically restart the system.

Click **Next**. A new window will appear.

This window allows you to create and save the unattended installation package.



You can make any changes you want by returning to the previous steps by clicking the **Back** button.

To specify the package name and where to save it, follow the next steps:

4. Click **Browse**.
5. Select the location where to save the file. You can save it on the local machine or on a network share.
6. Save the file with the desired name. The default filename is deploypack.exe.



**Note** We recommend that you choose an explicit filename, such as `deploypack_bdagent.exe`. You can also type the full path and name of the installation package directly in the edit field.

---

Click **Next** to create and save the unattended installation package. A new window will appear.

The next window shows you the results.



Click **Finish** to close the window.

You can find the unattended installation package at the location where you chose to save it. Next, you will have to copy the file on the target computers and execute it.

**Zenith Recommended Configuration**

Once the agent on the managed stand-alone desktop starts reporting to the Management Server, we highly recommend assigning power user rights. This would help the user make configuration changes to their BitDefender Client as required incase there are issues with the agent unable to synchronize with the Management Server.